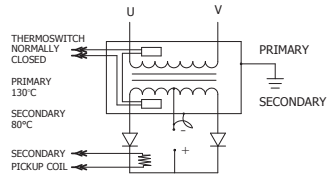


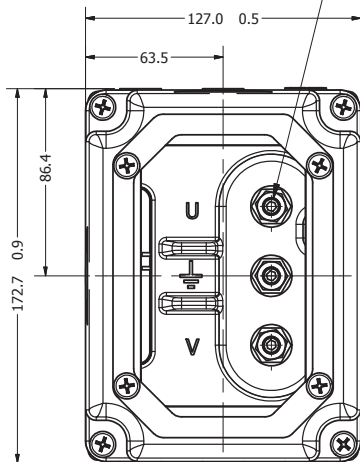
KVA @ 20% DUTY CYCLE	MODEL NUMBER	KVA @ 50% DUTY CYCLE	PRI V / FREQ	V/SEC	TURNS RATIO	MAX. Δ P	FLOW RATE	MAX WEIGHT
158	TDC-5583	100	650/1000	9.0	72:1	10 PSI (.69 BAR)	6 LPM	15 KG



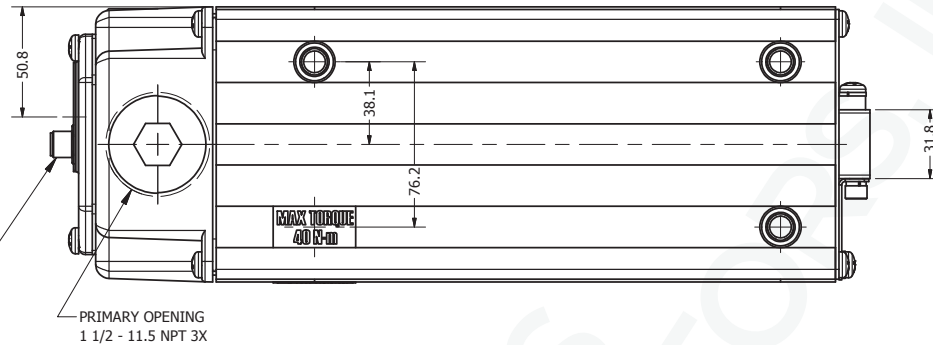
TRANSFORMER CASE MUST BE GROUNDED. TRANSFORMER WILL BE SHIPPED WITH A JUMPER CONNECTING SECONDARY CENTER TAP TO CASE. USER MUST PROVIDE APPROPRIATE GROUNDING OF SECONDARY CIRCUIT. FOR APPLICATIONS ABOVE A 20% DUTY CYCLE, CONTACT ROMAN MANUFACTURING FOR ASSISTANCE.

- 1) BRN - THERMOSWITCH
 - 2) WHT - PICK-UP COIL
 - 3) BLU - PICK-UP COIL
 - 4) BLK - THERMOSWITCH
- TURCK FS 4.4-0.5

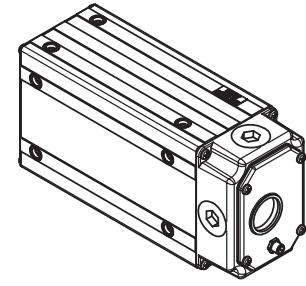
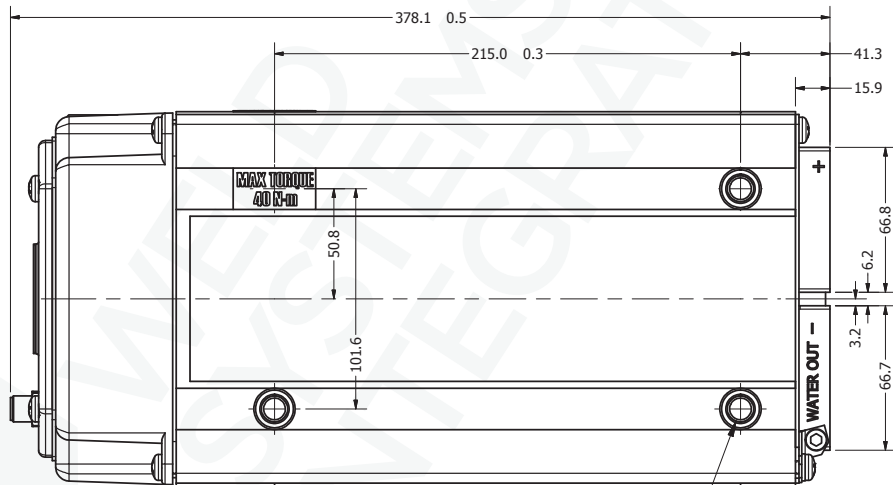
PRIMARY CONNECTION
M8x1.25 - 6g STUD 3X



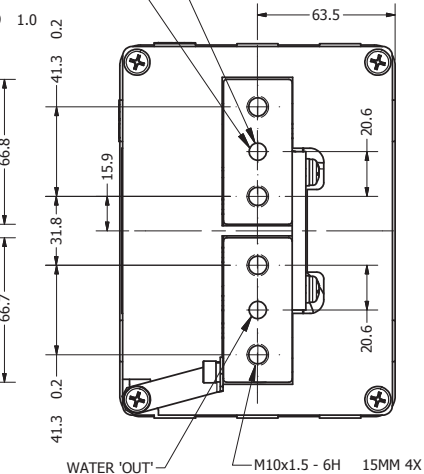
VIEW SHOWN WITH COVER REMOVED



PRIMARY OPENING
1 1/2 - 11.5 NPT 3X



WATER CONNECTION (2) PLS USE 10MM I.D. O-RING 30°C MAX INLET TEMP.



MOUNTING HOLES
Ø11.5MM 4.5MM
M10x1.5 - 6H 13.5MM 16X
MAX TORQUE 40 N-m

NOTE:
SEE RC-5583 FOR RATING CURVE
SEE LC-5583 FOR LOAD CURVE

NOTE*
The secondary terminals of this device are intended as an electrical connection only. Applications must be designed to minimize any forces applied to the secondary terminals, this can be accomplished by transferring forces to a structural member.

ALL DIMENSIONS IN MILLIMETERS

V	REVERSED WATER IN AND OUT	BCC	RD	10/15/2018
U	ADDED LABEL	BCC	KLY	10/5/2018
T	UPDATED MOUNTING HOLE CALL OUT	BCC	RD	9/28/2018
REV	DESCRIPTION	DATE		
© 2017 Copyright RoMan Manufacturing. THIS DRAWING AND ALL THE INFORMATION AND TECHNOLOGY IN IT ARE EXCLUSIVE, CONFIDENTIAL AND PROPRIETARY TO ROMAN MANUFACTURING, INC. THIS DRAWING IS OWNED BY ROMAN MANUFACTURING, INC. AND UNLESS SPECIFICALLY AUTHORIZED IN WRITING, NO COPIES SHALL BE MADE OF THIS DRAWING, AND SHALL BE USED ONLY FOR THE LIMITED PURPOSE FOR WHICH IT IS DISCLOSED AND ONLY TO THE BENEFIT OF ROMAN MANUFACTURING, INC. AND IT AND ANY COPIES, AUTHORIZED OR NOT, SHALL BE IMMEDIATELY RETURNED UPON ANY REQUEST THEREFOR.				
SCALE:	NONE	DETAILER:		rbowerman
DATE:	2/16/2005	DESIGNER:		bconner
		APPROX WEIGHT:		N/A
POWER SUPPLY				
ISO 22829 TYPE S				DRAWING NUMBER: 5583-1