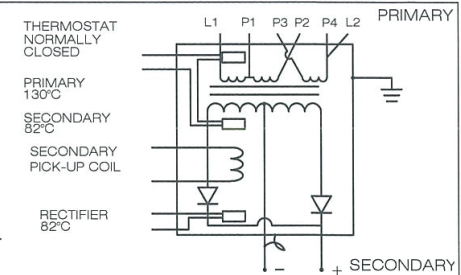
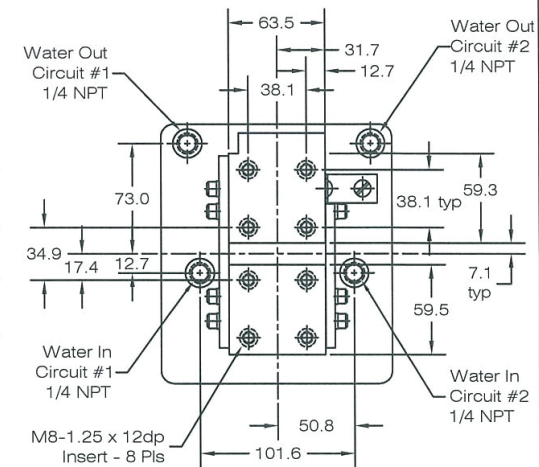
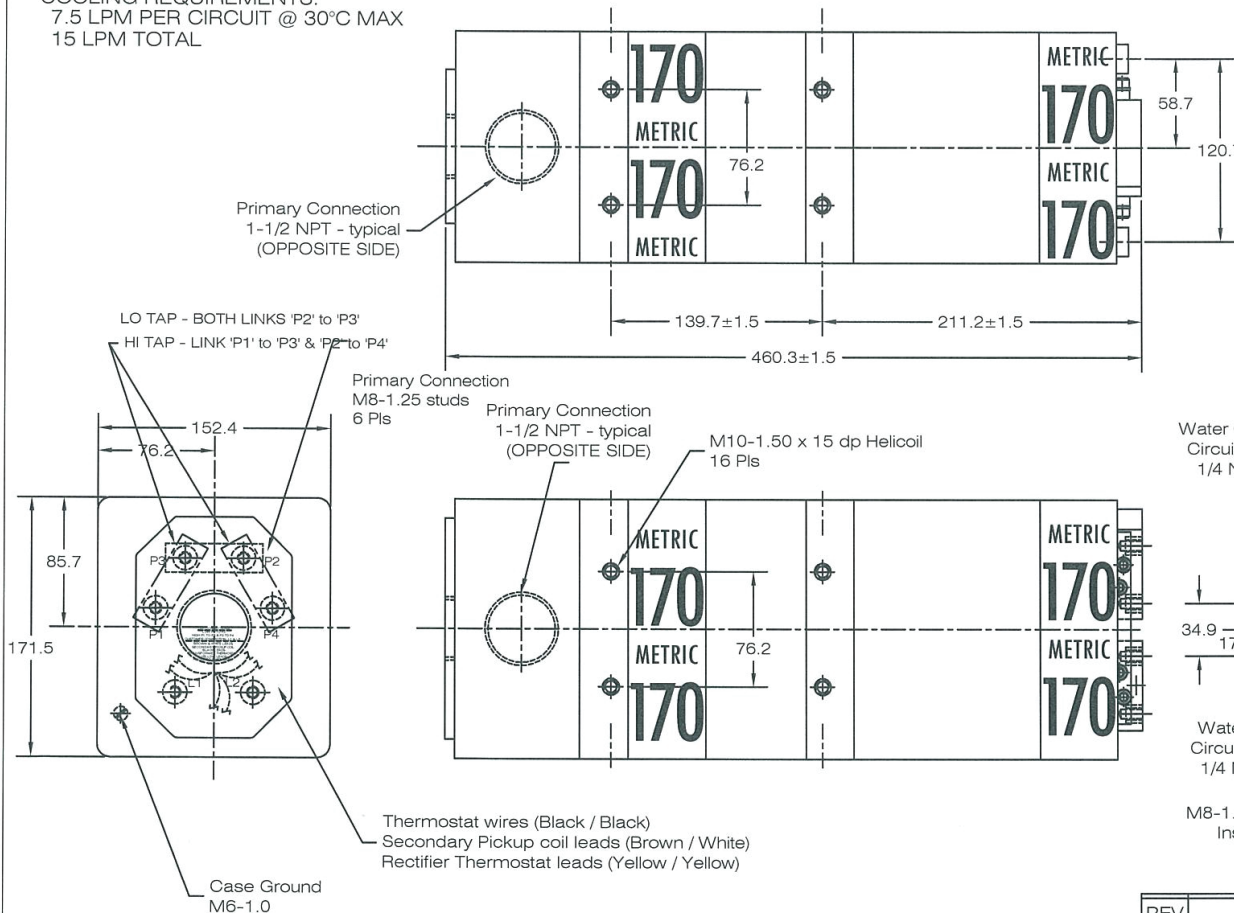


MODEL	DCX / NPM code	KVA @ 50% DC	PRIMARY VOLT/FREQ	SECONDARY VOLTAGE (DC)		TURNS RATIO		WEIGHT KG
TDC-1078	91-901-1220	170	650/1000	LO-TAP 9.5	HI-TAP 13.0	LO-TAP 68:1	HI-TAP 50:1	45
TDC-5620	—	170	800/1000	9.5	13.1	84:1	61:1	45
TDC-6599	—	170	325/1000	9.5	13.0	34:1	25:1	45

COOLING REQUIREMENTS:
7.5 LPM PER CIRCUIT @ 30°C MAX
15 LPM TOTAL



TRANSFORMER CASE MUST BE GROUNDED.
TRANSFORMER WILL BE SHIPPED WITH A JUMPER
CONNECTING SECONDARY CENTER TAP TO CASE.
USER MUST PROVIDE APPROPRIATE GROUNDING
OF SECONDARY CIRCUIT. FOR APPLICATIONS
ABOVE A 20% DUTY CYCLE, CONTACT ROMAN
MANUFACTURING FOR ASSISTANCE.



NOTE*

The secondary terminals of this device are intended as an electrical connection only. Applications must be designed to minimize any forces applied to the secondary terminals, this can be accomplished by transferring forces to a structural member.

REV	DESCRIPTION	DATE
AA	ADDED DIM FROM SEC PAD TO MOUNTING HOLE	GMA KLY 06May11
Z	ADDED LABEL FOR HI/LOW CONN. & THERMO/ROG COIL WIRE COLOR	JSB KLY 04Mar11
Y	ROTATE PRIMARY HOUSING 180 DEG	TWB KLY 29JAN10
X	ADDED OVERALL DIMENSION	KLY KLY 29JAN10
DC Power Supply		DRAWING NUMBER: 1010335