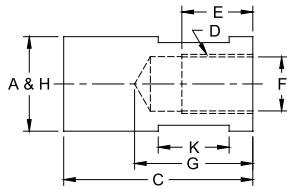
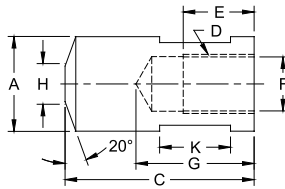


THREADED ELECTRODES



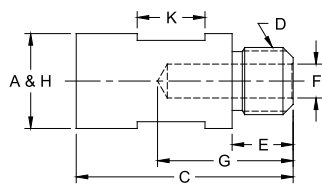
FEMALE FLAT



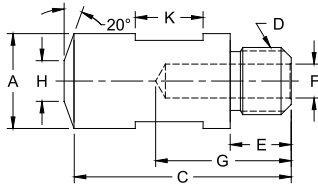
FEMALE TRUNCATED

CLASS 2 FEMALE THREADED ELECTRODES

CLASS 2 PART No.	Type	O.A.L. C	Thread D	Major Dia. A	Thread Depth E	Water Hole Depth G	Water Hole Dia. F	Over Wrench Flats	Wrench Flat Length K	Welding Face Dia. H
336508	Female Flat	2	5/8-18	1	3/4	1-1/4	37/64	7/8	3/4	1
336510				1-1/4				3/4	1-1/4	
336512				1-1/2				7/8	1-1/2	
326508	Female Truncat.	2	5/8-18	1	3/4	1-1/4	37/64	7/8	3/4	3/8
326510				1-1/4				3/4	1/2	
326512				1-1/2				7/8	5/8	



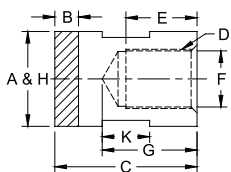
MALE FLAT



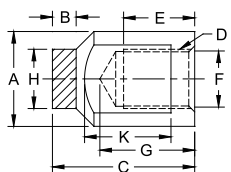
MALE TRUNCATED

CLASS 2 MALE THREADED ELECTRODES

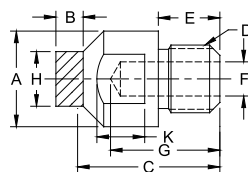
CLASS 2 PART No.	Type	O.A.L. C	Thread D	Major Dia. A	Thread Depth E	Water Hole Depth G	Water Hole Dia. F	Over Wrench Flats	Wrench Flat Length K	Welding Face Dia. H	
330507	Male Flat	2	5/8-18	7/8	9/16	1-1/4	5/16	3/4	5/8	7/8	
330508			5/8-18	1	9/16		5/16	7/8	5/8	1	
335506			5/8-11	3/4	15/32		5/16	5/8	1/2	3/4	3/4
335507			5/8-11	7/8	15/32		5/16	3/4	3/4	7/8	
335508	Male Truncat.	2	3/4-10	1	5/8	1-1/4	3/8	7/8	7/8	1	
335510			3/4-10	1-1/4	5/8		3/8	1	3/4	1-1/4	
335512			7/8-9	1-1/2	3/4		1/2	1-1/4	7/8	1-1/2	
325506	Male Truncat.	2	5/8-11	3/4	15/32	1-1/4	5/16	5/8	1/2	1/4	
325507			5/8-11	7/8	15/32		5/16	3/4	5/8	5/16	
325508			3/4-10	1	5/8		3/8	7/8	5/8	3/8	
325510			3/4-10	1-1/4	5/8		3/8	1	3/4	1/2	



10W FACED FEMALE FLAT



10W FACED FEMALE CENTERED



10W FACED MALE CENTERED

10W FACED MALE & FEMALE THREADED ELECTRODES

10W PART No.	Type	O.A.L. C	Thread D	Major Dia. A	Thread Depth E	Water Hole Depth G	Water Hole Dia. F	Over Wrench Flats	Wrench Flat Length K	Welding Face Dia. H	10W Thickness B
636308	Female Flat	1-1/2	5/8-18	1	3/4	1	37/64	7/8	1/2	1	1/4
636310				1-1/4				1/2	1-1/4		
636312				1-1/2				7/8	1-1/2		
626308	Female Centered	1-1/2	5/8-18	1	3/4	1	37/64	7/8	13/16	5/8	1/4
626310				1-1/4				11/16	5/8		
620307	Male Centered	1-1/2	5/8-18	7/8	9/16	1	5/16	3/4	3/4	1/2	1/4
625206		1-1/4	5/8-11	3/4	15/32	7/8	5/16	5/8	3/4	1/2	3/16
625308		1-5/8	3/4-10	1	5/8	1-3/16	3/8	7/8	7/8	5/8	1/4

FEMALE FLAT



FEMALE TRUNCATED



MALE FLAT



MALE TRUNCATED



10W FACED FEMALE FLAT



10W FACED FEMALE CENTERED



10W FACED MALE CENTERED

