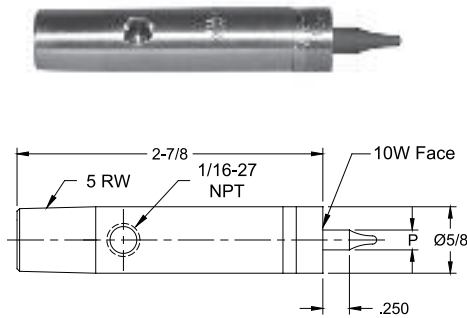
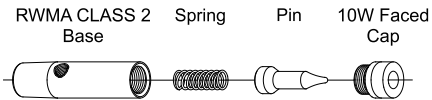
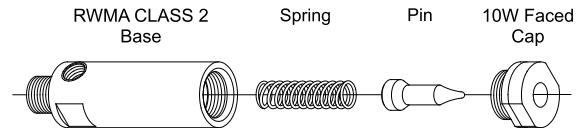
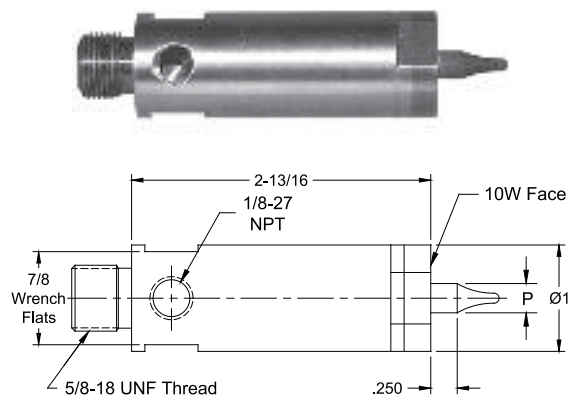


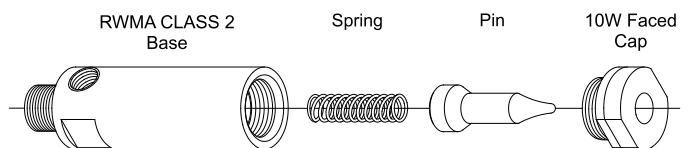
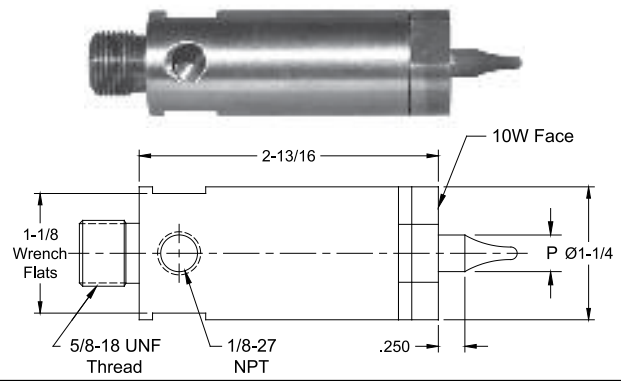
CHAMELEON/MAX-LIFE™ NUT WELDING ELECTRODES



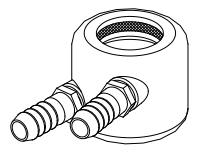
Nut Welding Assemblies	Nut Thread Size	Pin Dia. P	RWMA CLASS 2 Base	Spring	Ceramic Coated Steel Pin	10W Faced Cap
16-37725-04	#4	.142	16-37325	16-950078-01	16-950064-04	16-37725-C04
16-37725-05	#5	.158	16-37325	16-950078-01	16-950064-05	16-37725-C05
16-37725-06	#6	.173	16-37325	16-950078-01	16-950064-06	16-37725-C06
16-37725-M4	4MM	.187	16-37325	16-950078-01	16-950064-M4S	16-37725-CM4
16-37725-08	#8	.198	16-37325	16-950078-01	16-950064-08	16-37725-C08
16-37725-10	#10	.220	16-37325	16-950078-01	16-950064-10	16-37725-C10
16-37725-M5	5MM	.226	16-37325	16-950078-01	16-950064-M5S	16-37725-CM5
16-37725-12	#12	.250	16-37325	16-950078-01	16-950064-12	16-37725-C12
16-37725-M6	6MM	.266	16-37325	16-950078-01	16-950064-M6S	16-37725-CM6
16-37725-25	.250	.283	16-37325	16-950078-01	16-950064-25	16-37725-C25



Nut Welding Assemblies	Nut Thread Size	Pin Dia. P	RWMA CLASS 2 Base	Spring	Ceramic Coated Steel Pin	10W Faced Cap
16-37825-M4	4MM	.187	16-37825	16-950065-01	16-950064-M4	16-37825-CM4
16-37825-M5	5MM	.226	16-37825	16-950065-01	16-950064-M5	16-37825-CM5
16-37825-M6	6MM	.266	16-37825	16-950065-01	16-950064-M6	16-37825-CM6
16-37825-M7	7MM	.305	16-37825	16-950065-01	16-950064-M7	16-37825-CM7
16-37825-M8	8MM	.344	16-37825	16-950065-01	16-950064-M8	16-37825-CM8
16-37825-M9	9MM	.384	16-37825	16-950065-01	16-950064-M9	16-37825-CM9

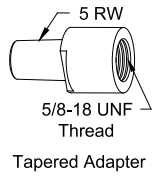


Nut Welding Assemblies	Nut Thread Size	Pin Dia. P	RWMA CLASS 2 Base	Spring	Ceramic Coated Steel Pin	10W Faced Cap
16-37826-M10	10MM	.423	16-37826	16-950065-01	16-950064-M10	16-37826-CM10
16-37826-M11	11MM	.463	16-37826	16-950065-01	16-950064-M11	16-37826-CM11
16-37826-M12	12MM	.502	16-37826	16-950065-01	16-950064-M12	16-37826-CM12
16-37826-M14	14MM	.581	16-37826	16-950065-01	16-950064-M14	16-37826-CM14



External Electrode Cooling Chamber

Electrode Dia.	Cooling Chamber Part No.	Tapered Adapter Part No.
5/8	18-1340	--
1	18-1342	18-7741
1-1/4	18-1343	18-7742



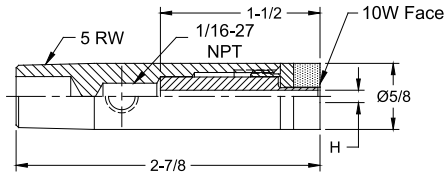
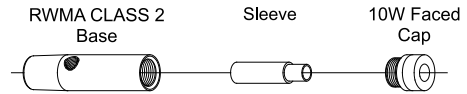
Tapered Adapter

All dimensions are in inches unless otherwise noted

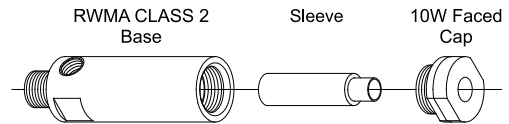
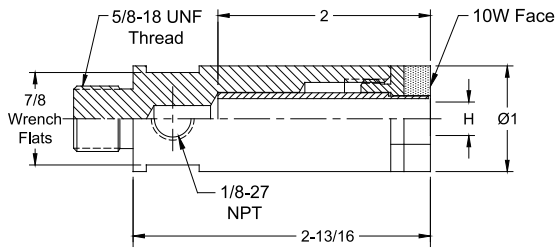
- Electrode Assemblies 16-37825-XX and 16-37826-XXX may be used with 5/8-18 threaded holders 18-169, 18-170, 18-171, shown on page 32

- Electrode Assemblies 16-37825-XX and 16-37826-XXX may be used with Platen Mounted holders (page 49) by using adapter 18-7743 shown on page 31

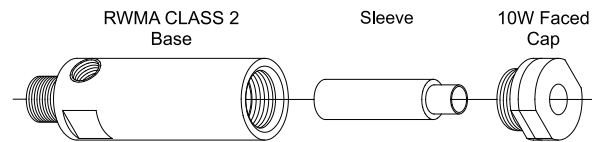
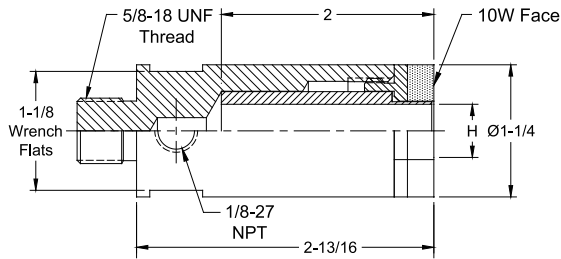
CHAMELEON/MAX-LIFE™ STUD WELDING ELECTRODES



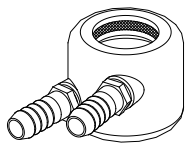
Stud Welding Assemblies	Screw Thread Size	Sleeve I.D. H	RWMA CLASS 2 Base	Ceramic Coated Steel Sleeve	10W Faced Cap
16-37325-116	#4	.116	16-37325	16-953116	16-37325-C116
16-37325-132	#5	.132	16-37325	16-953132	16-37325-C132
16-37325-140	#6	.140	16-37325	16-953140	16-37325-C140
16-37325-169	#8	.169	16-37325	16-953169	16-37325-C169
16-37325-169	4MM	.169	16-37325	16-953169	16-37325-C169
16-37325-191	#10	.191	16-37325	16-953191	16-37325-C191
16-37325-204	5MM	.204	16-37325	16-953204	16-37325-C204
16-37325-220	#12	.220	16-37325	16-953220	16-37325-C220
16-37325-243	6MM	.243	16-37325	16-953243S	16-37325-C243
16-37325-254	.250	.254	16-37325	16-953254S	16-37325-C254



Stud Welding Assemblies	Screw Thread Size	Sleeve I.D. H	RWMA CLASS 2 Base	Ceramic Coated Steel Sleeve	10W Faced Cap
16-37525-243	6MM	.243	16-37825	16-953243	16-37525-C243
16-37525-254	.250	.254	16-37825	16-953254	16-37525-C254
16-37525-320	.312	.320	16-37825	16-953320	16-37525-C320
16-37525-320	8MM	.320	16-37825	16-953320	16-37525-C320
16-37525-380	.375	.380	16-37825	16-953380	16-37525-C380

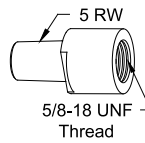


Stud Welding Assemblies	Screw Thread Size	Sleeve I.D. H	RWMA CLASS 2 Base	Ceramic Coated Steel Sleeve	10W Faced Cap
16-37526-399	10MM	.399	16-37526	16-953399	16-37526-C399
16-37526-444	.438	.444	16-37526	16-953444	16-37526-C444
16-37526-477	12MM	.477	16-37526	16-953477	16-37526-C477
16-37526-502	.500	.502	16-37526	16-953502	16-37526-C502
16-37526-630	.625	.630	16-37526	16-953630	16-37526-C630



External Electrode Cooling Chamber

Electrode Dia.	Cooling Chamber Part No.	Tapered Adapter Part No.
5/8	18-1340	--
1	18-1342	18-7741
1-1/4	18-1343	18-7742



Tapered Adapter

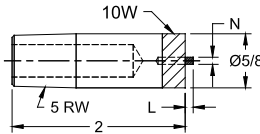
- Electrode Assemblies 16-37525-XXX and 16-37526-XXX may be used with 5/8-18 threaded holders 18-169, 18-170, 18-171, shown on page 32

- Electrode Assemblies 16-37525-XXX and 16-37526-XXX may be used with Platen Mounted holders (page 49) by using adapter 18-7743 shown on page 31

SELF-PILOTING NUT WELDING ELECTRODES



PART No.	Taper Size	Pin Dia. N	For Nut Thread Size	Pin Length L
16-3764-04	5 RW	.082	#4	.093
16-3764-05		.093	#5	
16-3764-06		.100	#6	
16-3764-M3.5		.107	3.5 MM	
16-3764-M4	5 RW	.123	4.0 MM	.156
16-3764-08		.129	#8	
16-3764-10		.143	#10	
16-3764-M5		.156	5.0 MM	

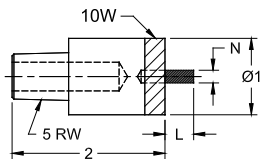


FEATURES AND SPECIFICATIONS

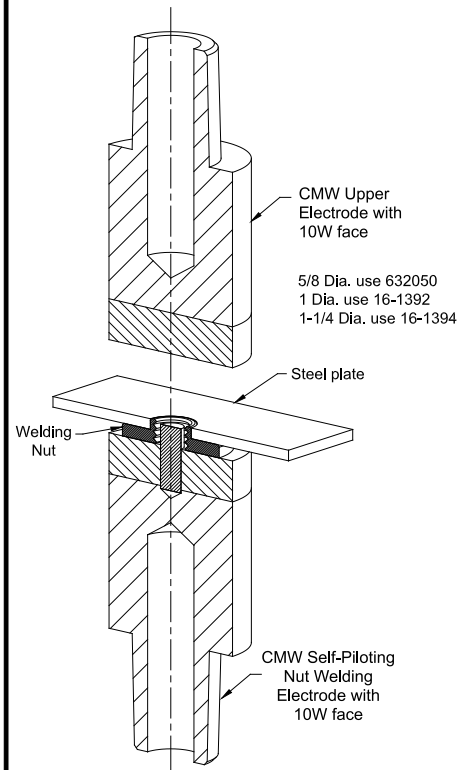
- 10W faced RWMA CLASS 2 material
- Insulated pin made of anodized aluminum
- Pins are treated to 55 HRC for wear resistance
- Use with tapered electrode holders
- Use with flat faced electrodes



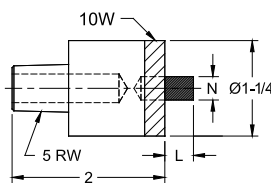
PART No.	Taper Size	Pin Dia. N	For Nut Thread Size	Pin Length L
16-3765-12	5 RW	.166	#12	.375
16-3765-M6		.189	6.0 MM	
16-3765-25		.192	1/4	
16-3765-M7		.223	7.0 MM	
16-3765-M8	5 RW	.252	8.0 MM	.375
16-3765-31		.257	5/16	
16-3765-M9		.291	9.0 MM	



TYPICAL SET-UP FOR SELF PILOTING NUTS



PART No.	Taper Size	Pin Dia. N	For Nut Thread Size	Pin Length L
16-3766-38	5 RW	.306	3/8	.375
16-3766-M10		.320	10 MM	
16-3766-M11		.359	11 MM	
16-3766-44		.361	7/16	
16-3766-M12	5 RW	.388	12 MM	.375
16-3766-50		.415	1/2	
16-3766-M14		.455	14 MM	

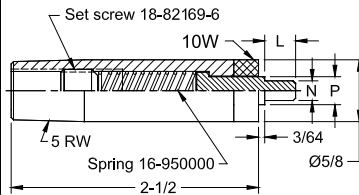


- See page 6 for Metric conversions
- See page 7 for Taper dimensions

NON-PILOTING NUT WELDING ELECTRODES



PART No.	Taper or Thd. Size	Pin Dia. N	Pilot Length L	Pilot Dia. P	For Nut Thd. Size N	Pin Part No.
16-3774-04		.082	.312	.142	#4	16-950001-04
16-3774-05		.093		.158	#5	16-950001-05
16-3774-06		.100		.173	#6	16-950001-06
16-3774-08	5RW	.129	.312	.198	#8	16-950001-08
16-3774-10		.143		.220	#10	16-950001-10
16-3774-M6		.186		.250	6MM	16-950001-M6

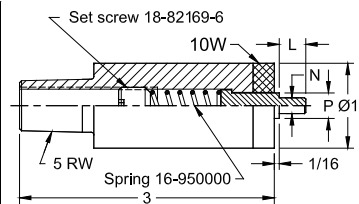


FEATURES AND SPECIFICATIONS

- 10W faced RWMA CLASS 2 material
- Insulated pin made of anodized aluminum
- Insulated pins are treated to 55 HRC for wear resistance
- Use with tapered electrode holders
- Use with flat faced electrodes
- Accepts external cooling chambers

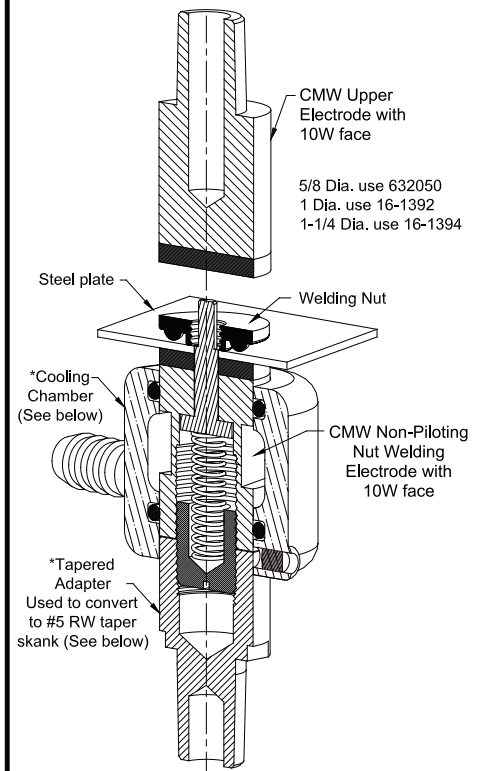
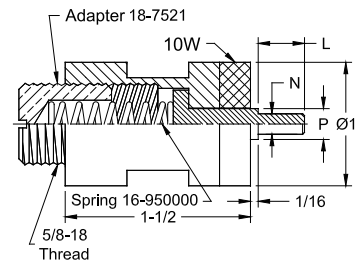


PART No.	Taper or Thd. Size	Pin Dia. N	Pilot Length L	Pilot Dia. P	For Nut Thd. Size N	Pin Part No.
16-3775-12		.166	.312	.250	#12	16-950001-12
16-3775-M6		.186		.250	6MM	16-950001-M6
16-3775-25		.192		.283	1/4	16-950001-25
16-3775-M8	5RW	.252	.312	.283	8MM	16-950001-M8
16-3775-31		.257		.345	5/16	16-950001-31
16-3775-M10		.322		.347	10MM	16-950001-M10

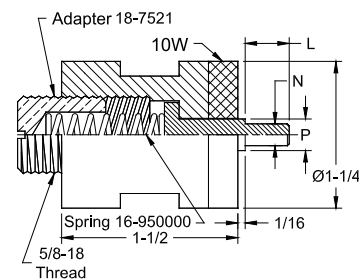


TYPICAL SET-UP FOR NON PILOTING NUTS

PART No.	Taper or Thd. Size	Pin Dia. N	Pilot Length L	Pilot Dia. P	For Nut Thd. Size N	Pin Part No.
16-3785-12	5/8-18	.166	.375	.250	#12	16-950002-12
16-3785-M6		.186		.269	6MM	16-950002-M6
16-3785-25		.192		.283	1/4	16-950002-25
16-3785-M8		.252		.348	8MM	16-950002-M8
16-3785-31	5/8-18	.257	.375	.345	5/16	16-950002-31
16-3785-M10		.320		.427	10MM	16-950002-M10
16-3785-M11		.359		.466	11MM	16-950002-M11
16-3785-M12		.388		.470	12MM	16-950002-M12



PART No.	Taper or Thd. Size	Pin Dia. N	Pilot Length L	Pilot Dia. P	For Nut Thd. Size N	Pin Part No.
16-3786-12	5/8-18	.166	.375	.250	#12	16-950002-12
16-3786-M6		.186		.269	6MM	16-950002-M6
16-3786-25		.192		.283	1/4	16-950002-25
16-3786-M8		.252		.348	8MM	16-950002-M8
16-3786-31	5/8-18	.257	.375	.345	5/16	16-950002-31
16-3786-38		.306		.408	3/8	16-950002-38
16-3786-M10		.320		.427	10MM	16-950002-M10
16-3786-M11		.359		.466	11MM	16-950002-M11
16-3786-44		.361		.470	7/16	16-950002-44
16-3786-M12	5/8-18	.388	.375	.470	12MM	16-950002-M12
16-3786-50		.415		.533	1/2	16-950002-50



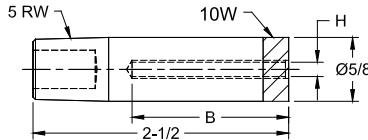
*For additional information on cooling chamber and tapered adapter see page 27

Electrode assemblies 18-3785-XX and 18-3786-XX may be used with 5/8-18 threaded holders 18-169, 18-170, 18-171

STUD WELDING ELECTRODES



Assembled Electrode Part Number			Insulation I.D. H	Screw Thread Size
Depth B				
.375	.750	1.125	.116	#4
16-3724-1161	16-3724-1162	16-3724-1163		
16-3724-1321	16-3724-1322	16-3724-1323	.132	#5
.500	1.000	1.500	.140	#6
16-3724-1401	16-3724-1402	16-3724-1403		
16-3724-1501	16-3724-1502	16-3724-1503	.150	--
16-3724-1571	16-3724-1572	16-3724-1573	.157	--
16-3724-1691	16-3724-1692	16-3724-1693	.169	#8
.750	1.500	--	.191	#10
16-3724-1911	16-3724-1912			
16-3724-2201	16-3724-2202		.220	#12
16-3724-2541	16-3724-2542		.254	.250

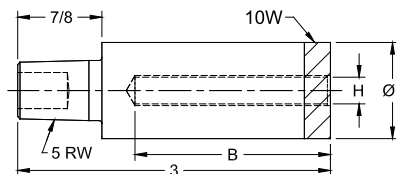


FEATURES AND SPECIFICATIONS

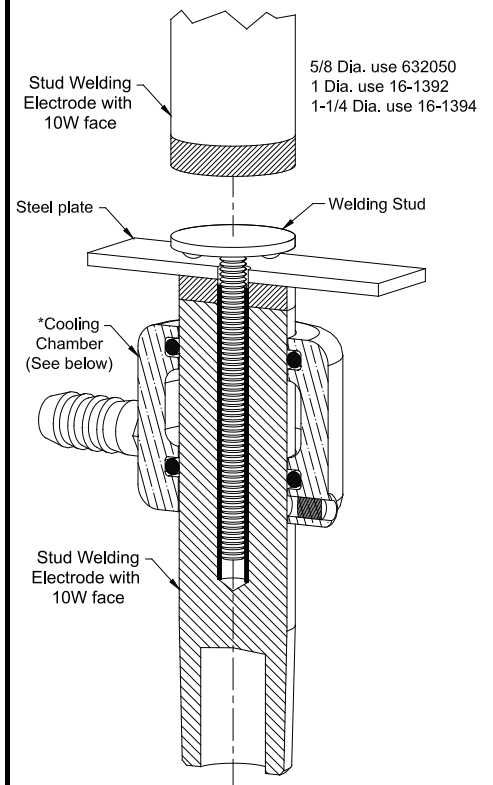
- 10W faced RWMA CLASS 2 material
- Insulated sleeve made of anodized aluminum
- Insulated sleeve are treated to 55 HRC both I.D. & O.D. for wear resistance
- Use with tapered electrode holders
- Use with flat faced electrodes
- Accepts external Cooling Chambers



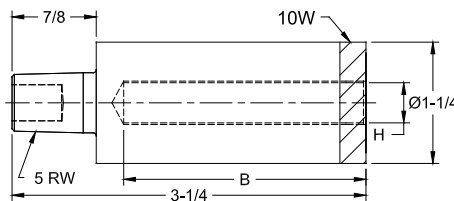
Assembled Electrode Part Number		Insulation I.D. H	Screw Thread Size
Depth B			
.750	1.500	.254	.250
16-3725-2541	16-3725-2542		
1.000	2.000	.277	--
16-3725-2771	16-3725-2772		
16-3725-3171	16-3725-3172	.317 (8MM)	.312
16-3725-3391	16-3725-3392	.339	--
16-3725-3651	16-3725-3652	.365	--
16-3725-3801	16-3725-3802	.380	.375



TYPICAL SET-UP FOR STUD WELDING



Assembled Electrode Part Number		Insulation I.D. H	Screw Thread Size
Depth B			
1.000	2.000	.401	--
16-3726-4011	16-3726-4012		
16-3726-4271	16-3726-4272	.427	--
16-3726-4441	16-3726-4442	.444	.437
16-3726-5021	16-3726-5022	.502	.500
1.000	2.000	.552	--
16-3726-5521	16-3726-5522		
16-3726-6301	16-3726-6302	.630	.625
16-3726-6761	16-3726-6762	.676	--
16-3726-8011	16-3726-8012	.801	--



*For additional information on cooling chamber see page 27

Electrode Dia.	Cooling Chamber
5/8	18-1340
1	18-1342
1-1/4	18-1343