

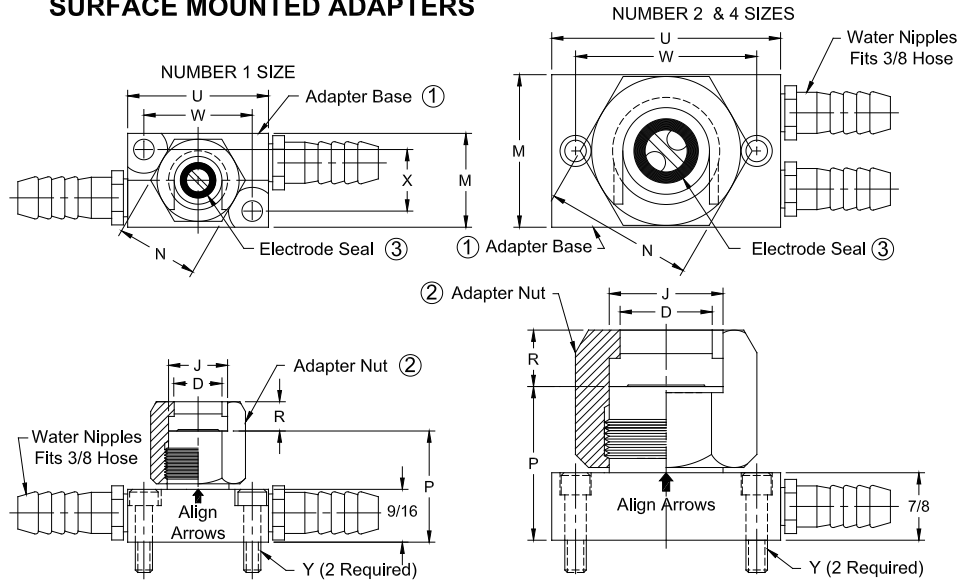
# 800 SERIES "NU-TWIST"® ADAPTERS

## CMW "NU-TWIST"® FEATURES

1. Hex locking nut may be tightened or loosened effectively by hand or wrench for easy replacement of electrodes.
2. "O" ring seals provide water tight connections.
3. Double groove construction in bore or locking nut accurately aligns and locks the

4. electrode in position with a maximum of a turn and one half.
5. Through use of baffles in adapters and in electrodes over 1" long efficient cooling is effectively achieved.
6. All components are of corrosion-resistant alloys.
7. Maintenance costs are unusually low.
8. Adapter bases are RWMMA CLASS 2 material.

## SURFACE MOUNTED ADAPTERS



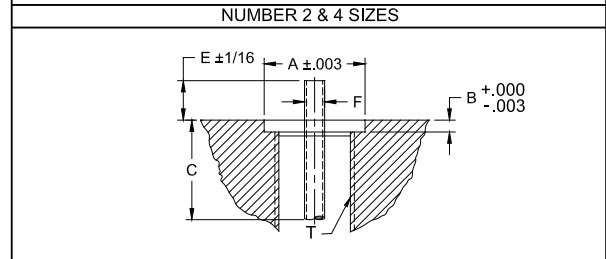
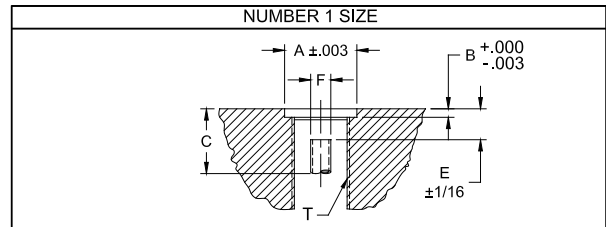
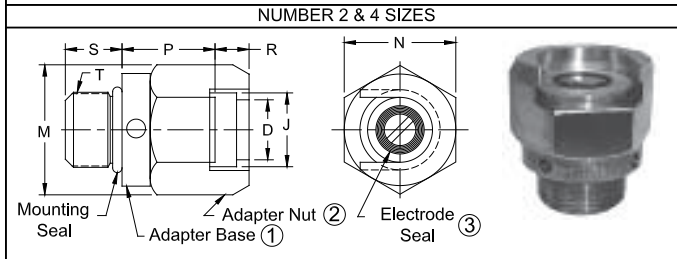
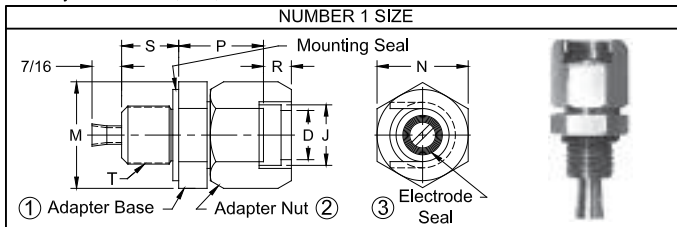
800 SERIES "NU-TWIST"® SURFACE MOUNTED											
Size	Adapter Part No.	Adapter Size									
		D	J	M	N	P	R	U	W	X	Y
1	18-801	1/2	5/8	1	7/8	1-1/4	1/4	1-1/2	1-5/32	21/32	No. 10-24 Scr.
2	18-802	15/16	1-1/8	1-1/2	1-1/2	1-13/16	7/16	2-1/2	2	--	No. 1/4-20 Scr.
4	18-804	1-7/16	1-5/8	2	2	1-13/16	7/16	3	2-3/8	--	No. 1/4-20 Scr.

REPLACEMENT PARTS				
Adapter Part No.	Water Nipples	Adapter Base 1	Adapter Nut 2	Electrode Seals 3
18-801		18-80110	18-80150	18-10060-5
18-802	18-10050	18-80210	18-80250	18-10060-1
18-804		18-80410	18-80450	18-10061-14

For replacement parts see page 51

## 800 SERIES "NU-TWIST"® THREADED ADAPTERS & MOUNTING INFORMATION

May use with 100, 200, and 300 series holders to make "NU-TWIST"® holders

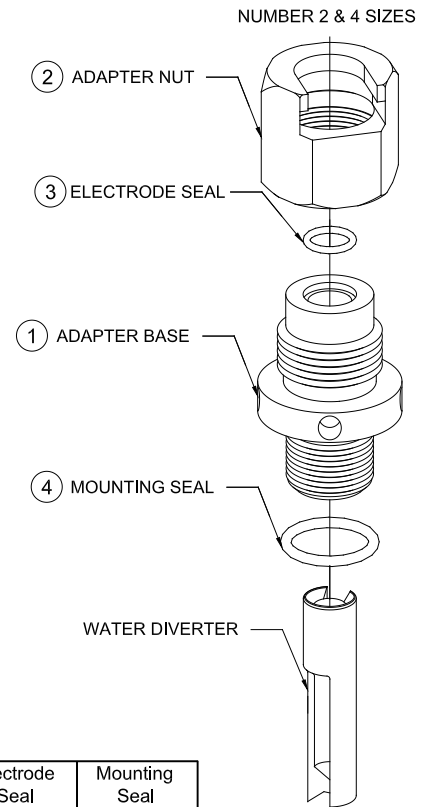
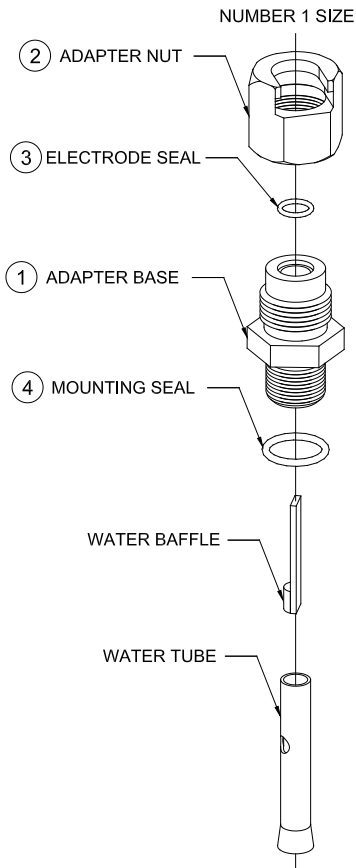


800 SERIES "NU-TWIST"® THREADED									
Size	Adapter Part No.	Adapter Size							
		D	J	M	N	P	R	S	T (Thread)
1	18-811	1/2	5/8	1	7/8	15/16	1/4	9/16	5/8-18
2	18-812	15/16	1-1/8	1-1/2	1-1/2	1-5/16	7/16	3/4	1-14
4	18-814	1-7/16	1-5/8	2	2	1-5/16	7/16	3/4	1-1/2-12

MOUNTING INFORMATION FOR THREADED ADAPTERS							
Size	Thd. Adapter Assy. No.	C'bore Dia. A	C'bore Depth B	Thread Depth Min. C	Tube Height E	Tube Dia. F	Thread T
1	18-811	.750	.083	5/8	3/8	.244	5/8-18
2	18-812	1.126	.113	13/16	15/16	.244	1-14
4	18-814	1.626	.173	13/16	15/16	.375	1-1/2-12

For replacement parts see page 51

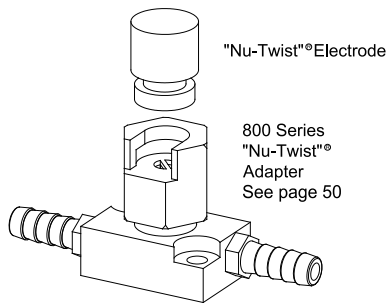
# 800 SERIES "NU-TWIST"<sup>®</sup> THREADED ADAPTER REPLACEMENT PARTS



Adapter Assembly Part No.	Adapter Base* 1	Adapter Nut 2	Electrode Seal 3	Mounting Seal 4
18-811	18-81110	18-80150	18-10061-5	18-10060-11
18-812	18-81210	18-80250	18-10061-10	18-10060-17
18-814	18-81410	18-80450	18-10061-14	18-10060-25

\* Adapter base includes water tube & baffel or water diverter

## "NU-TWIST"<sup>®</sup> ELECTRODES



- No tapers or threads
- Can be extracted with a simple turn of hexagon locking nut
- Any contour in electrode face can be located or relocated in a given position
- Water circulated to end of electrode for maximum cooling
- Silver plated contact surfaces on electrode and base for maximum conductivity
- Provides a simple, low-cost electrode for most applications
- Electrodes shown can be modified with contours to provide faces required for most resistance welding applications

FLAT FACE "NU-TWIST" <sup>®</sup> ELECTRODE				TYPE 0 FLAT & 0 TRUNCATED "NU-TWIST" <sup>®</sup> ELECTRODE								
Size	Type	Electrode Part No.		Body Dia. H	Weld Face Dia. A	Overall Length C	Adapter Clearance E	Water Hole Dia. F	Water Hole Depth G	Electrode Seat Dia. J	Elect. Ext. From Adapt. K	
		RWMA CLASS 2	RWMA CLASS 3									
1	0 Flat	338750	538750	1/2	1/2	3/4	--	1/4	3/8	.625	1/2	
		338030	538030	1/2	1/2	1-1/2	--	1/4	1-1/8	.625	1-1/4	
1	0 Trunc.	378750	578750	1/2	1/4	3/4	--	1/4	3/8	.625	1/2	
		378030	578030	1/2	1/4	1-1/2	--	1/4	1-1/8	.625	1-1/4	
1	Flat	338751	538751	5/8	5/8	3/4	5/16	1/4	3/8	.625	1/2	
		338031	538031	5/8	5/8	1-1/2	5/16	1/4	1-1/8	.625	1-1/4	
2	Flat	338012	538012	1-1/4	1-1/4	1	5/8	1/2	1/2	1.125	1/2	
		338052	538052	1-1/4	1-1/4	2	5/8	1/2	1-1/2	1.125	1-1/2	
4	Flat	338014	538014	1-3/4	1-3/4	1	5/8	3/4	1/2	1.625	1/2	
		338054	538054	1-3/4	1-3/4	2	5/8	3/4	1-1/2	1.625	1-1/2	

Special face contours, lengths and diameters available on special order