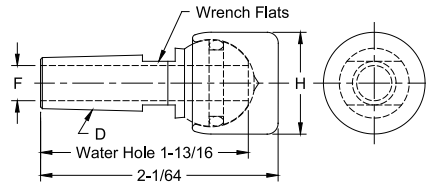
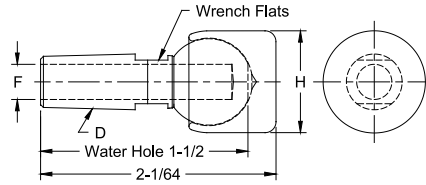


# BACK-UP ELECTRODES

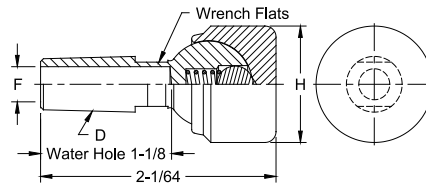
PART No.	Taper D	Water Hole Dia. F	Face Dia. H	Type
16-2304	4 RW	9/32	7/8	Thru hole with "O" ring
16-2305	5 RW	3/8		
16-2302	4 RW	9/32	1	
16-2303	5 RW	3/8		
16-2300	4 RW	9/32	1-1/4	
16-2301	5 RW	3/8		
16-2306	5 RW	3/8	1-1/2	



PART No.	Taper D	Water Hole Dia. F	Face Dia. H	Type
16-2314	4 RW	9/32	7/8	Blind hole
16-2315	5 RW	3/8		
16-2312	4 RW	9/32	1	
16-2313	5 RW	3/8		
16-2310	4 RW	9/32	1-1/4	
16-2311	5 RW	3/8		
16-2316	5 RW	3/8	1-1/2	



PART No.	Taper D	Water Hole Dia. F	Face Dia. H	Type
16-23129	4 RW	9/32	1	Blind hole with spring and ball
16-23139	5 RW	3/8		
16-23109	4 RW	9/32	1-1/4	
16-23119	5 RW	3/8		
16-23169	4 RW	9/32	1-1/2	
16-23179	5 RW	3/8		

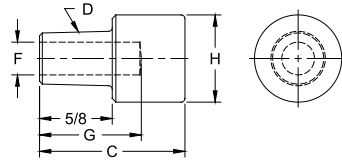


Standard material: Shank - RWMA CLASS 2  
Cap - RWMA CLASS 2  
Optional material available on special order:  
Cap-Class 3 and 10W facing

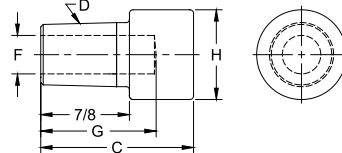


## LARGE DIAMETER FLAT FACED BACK-UP ELECTRODES

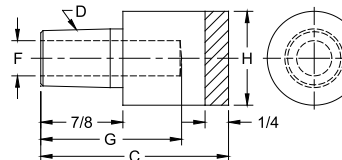
PART No.	Weld Face Material	O.A.L. C	Taper D	Water Hole		Weld Face Dia. H
				Dia. F	Depth G	
16-3012						3/4
16-3010	CLASS 2	1-1/4	4 RW	9/32	7/8	1
16-3030						1-1/4



PART No.	Weld Face Material	O.A.L. C	Taper D	Water Hole		Weld Face Dia. H
				Dia. F	Depth G	
16-3021						7/8
16-3020	CLASS 2	1-1/2	5 RW	3/8	1-1/8	1
16-3040						1-1/4
16-3050						1-1/2

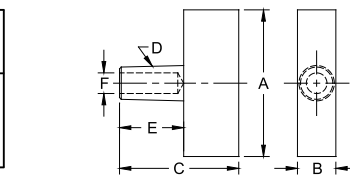


PART No.	Weld Face Material	O.A.L. C	Taper D	Water Hole		Weld Face Dia. H
				Dia. F	Depth G	
16-1392		2				1
16-1393	10W	3	5 RW	3/8	5/8	1
16-1394		2				1-1/4
16-1395		3-1/4				1-1/4

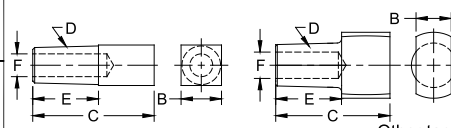


## SQUARE & RECTANGULAR FACED BACK-UP ELECTRODES

PART No.	Weld Face Material	O.A.L. C	Taper D	Shank Length E	Water Hole Dia. F	Weld Face Lgth. A	Weld Face Width B
16-3111	CLASS 2	1-5/8	4 RW	7/8	9/32	2	5/8
16-382160	Casting		5 RW		3/8	1-1/2	1/2
16-3121			5 RW		3/8	2	5/8



PART No.	Weld Face Material	O.A.L. C	Taper D	Shank Length E	Water Hole Dia. F	Weld Face Lgth. A	Weld Face Width B
16-3120	Cold Formed	1-3/4	5 RW	7/8	3/8	5/8	5/8
16-384110		1-5/8	5 RW	7/8	3/8	15/16	1/2



Other tapers and alloys available to special order